

04 22 2000

Resolution No. 11-2000-311

RECEIVED

RESOLUTION OF THE  
WHITE MOUNTAIN APACHE TRIBE OF THE  
FORT APACHE INDIAN RESERVATION

WHEREAS, tribal member Joyce Perry has come before the Tribal Council to request permission to lease Lot A-102 in the Hondah Homesites, for the purpose of constructing a home on the premises; and

WHEREAS, according to Tribal Realty records, Lot A-102 in the Hondah Homesites community is vacant and has not been assigned to any tribal member; and

WHEREAS, after consideration of this matter, the Tribal Council concludes that permission should be granted to tribal member Joyce Perry to lease Lot A-102 in the Hondah Homesites Community, for the purpose of constructing a home on the premises.

BE IT RESOLVED by the Tribal Council of the White Mountain Apache Tribe that it hereby approves a 25-year residential lease, with an automatic 25-year renewal, for the premises described as Hondah Homesites Lots A-102, to tribal member Joyce Perry, pursuant to the following conditions:

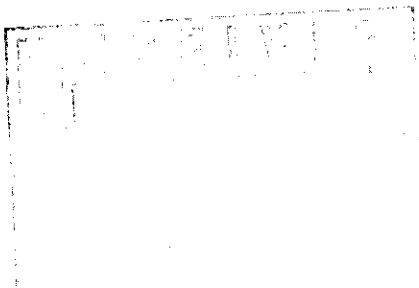
1. Construction of the home shall commence within ninety (90) days, weather permitting, and shall be completed within two years of the date of this resolution;
2. The premises shall not be re-leased or rented without the written consent of the Tribe in the form of a Tribal Council resolution;
3. Boundaries of the leased premises shall not exceed the original land assignment described herein;
4. Any new addition or construction of the premises must be approved by the Tribal Engineering Department;
5. The Tribal Council must approve the removal of any trees on the property. Said premises shall be used for residential purposes only and no purpose that would injure reputation or be in violation of law;
6. No horses or other livestock shall be permitted to be on the premises without the consent of the Tribal Council;
7. Lessee shall, at Lessee's sole cost and expense, keep and maintain all building structures and other improvements on said premises in good order and repair and shall keep the whole thereof in a clean, sanitary, neat and attractive condition;


8. The Lessee shall not encumber, assign or transfer ownership of the premise without the written consent of the Tribe in the form of a Tribal Council resolution;
9. No commercial business is allowed to take place on the premises, which includes, but is not limited to, auto repair, nurseries, junk yards, or any other wholesale or retail business that would detract from a residential appearance;
10. Lessee shall obtain certification that water and septic/sewer facilities are available from the Tribe or IHS;

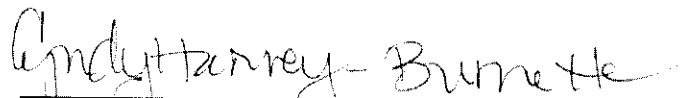
BE IT FURTHER RESOLVED by the Tribal Council that violation of any of the foregoing conditions shall make this authorization for a lease null and void.

BE IT FURTHER RESOLVED by the Tribal Council of the White Mountain Apache Tribe that it hereby authorizes the Tribal Chairman, or in his absence, the Vice Chairman or other duly authorized representative, to execute any and all documents necessary to carry out the intent of this resolution.

The foregoing resolution was on NOVEMBER 1, 2000, duly adopted by a vote of SIX for and ZERO against, by the Tribal Council of the White Mountain Apache Tribe, pursuant to authority vested in it by Article IV, Section 1(a), (b), (h), (i), (t) and (u) of the Constitution of the Tribe, ratified by the Tribe September 30, 1993, and approved by the Secretary of the Interior on November 12, 1993, pursuant to Section 16 of the Act of June 18, 1934 (48 Stat. 984).



  
Chairman of the Tribal Council

  
Secretary of the Tribal Council

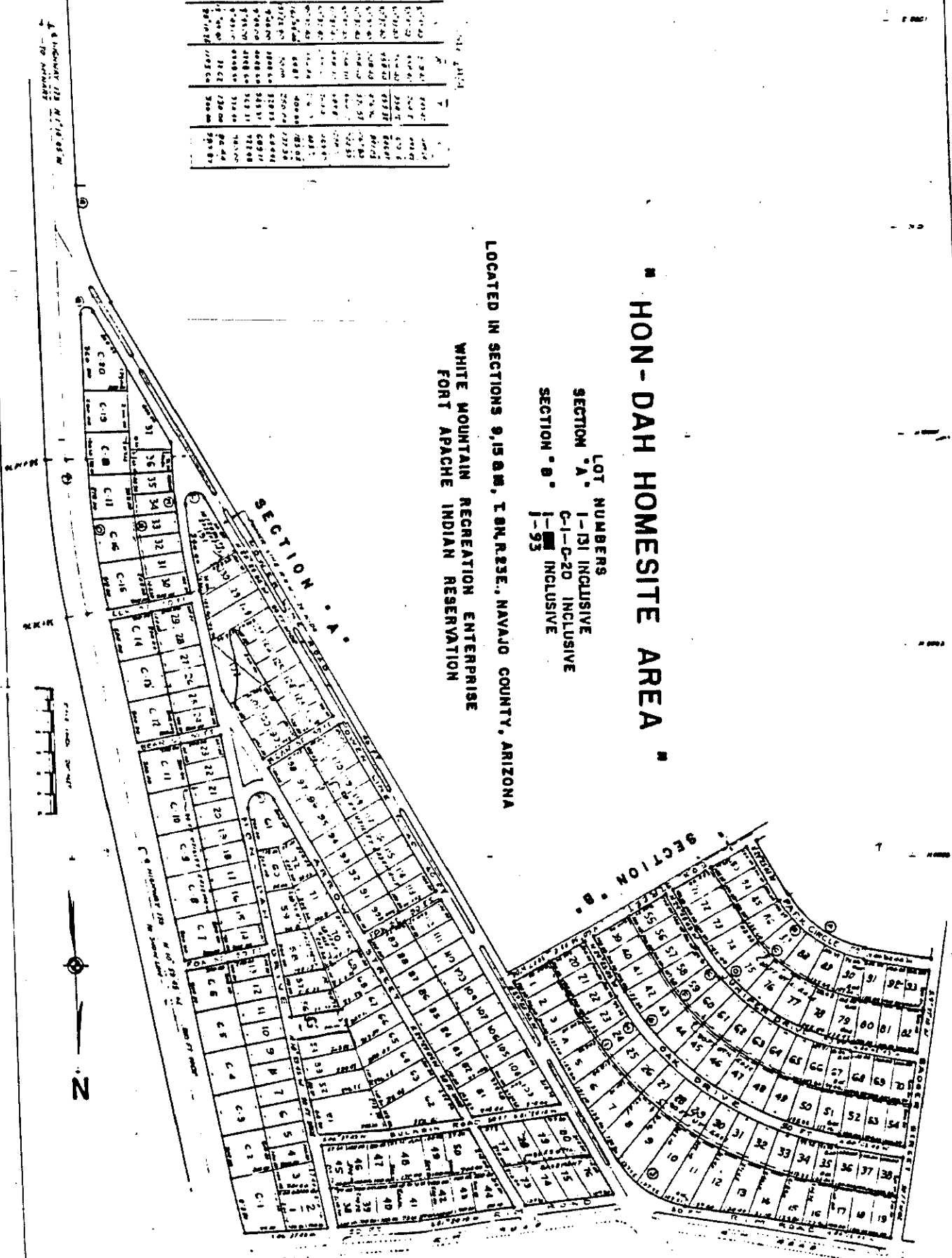
# HON-DAH HOMESITE AREA

LOCATED IN SECTIONS 9, 15, 20, T. 9 N., R. 23 E., NAVAJO COUNTY, ARIZONA

WHITE MOUNTAIN RECREATION ENTERPRISE  
FORT APACHE INDIAN RESERVATION

LOT NUMBERS  
SECTION "A" 1-131 INCLUSIVE  
C-1-C-20 INCLUSIVE  
SECTION "B" 1-95 INCLUSIVE

Lot No.	Acres	Area	Area	Area
1	0.12	0.12	0.12	0.12
2	0.12	0.12	0.12	0.12
3	0.12	0.12	0.12	0.12
4	0.12	0.12	0.12	0.12
5	0.12	0.12	0.12	0.12
6	0.12	0.12	0.12	0.12
7	0.12	0.12	0.12	0.12
8	0.12	0.12	0.12	0.12
9	0.12	0.12	0.12	0.12
10	0.12	0.12	0.12	0.12
11	0.12	0.12	0.12	0.12
12	0.12	0.12	0.12	0.12
13	0.12	0.12	0.12	0.12
14	0.12	0.12	0.12	0.12
15	0.12	0.12	0.12	0.12
16	0.12	0.12	0.12	0.12
17	0.12	0.12	0.12	0.12
18	0.12	0.12	0.12	0.12
19	0.12	0.12	0.12	0.12
20	0.12	0.12	0.12	0.12
21	0.12	0.12	0.12	0.12
22	0.12	0.12	0.12	0.12
23	0.12	0.12	0.12	0.12
24	0.12	0.12	0.12	0.12
25	0.12	0.12	0.12	0.12
26	0.12	0.12	0.12	0.12
27	0.12	0.12	0.12	0.12
28	0.12	0.12	0.12	0.12
29	0.12	0.12	0.12	0.12
30	0.12	0.12	0.12	0.12
31	0.12	0.12	0.12	0.12
32	0.12	0.12	0.12	0.12
33	0.12	0.12	0.12	0.12
34	0.12	0.12	0.12	0.12
35	0.12	0.12	0.12	0.12
36	0.12	0.12	0.12	0.12
37	0.12	0.12	0.12	0.12
38	0.12	0.12	0.12	0.12
39	0.12	0.12	0.12	0.12
40	0.12	0.12	0.12	0.12
41	0.12	0.12	0.12	0.12
42	0.12	0.12	0.12	0.12
43	0.12	0.12	0.12	0.12
44	0.12	0.12	0.12	0.12
45	0.12	0.12	0.12	0.12
46	0.12	0.12	0.12	0.12
47	0.12	0.12	0.12	0.12
48	0.12	0.12	0.12	0.12
49	0.12	0.12	0.12	0.12
50	0.12	0.12	0.12	0.12
51	0.12	0.12	0.12	0.12
52	0.12	0.12	0.12	0.12
53	0.12	0.12	0.12	0.12
54	0.12	0.12	0.12	0.12
55	0.12	0.12	0.12	0.12
56	0.12	0.12	0.12	0.12
57	0.12	0.12	0.12	0.12
58	0.12	0.12	0.12	0.12
59	0.12	0.12	0.12	0.12
60	0.12	0.12	0.12	0.12
61	0.12	0.12	0.12	0.12
62	0.12	0.12	0.12	0.12
63	0.12	0.12	0.12	0.12
64	0.12	0.12	0.12	0.12
65	0.12	0.12	0.12	0.12
66	0.12	0.12	0.12	0.12
67	0.12	0.12	0.12	0.12
68	0.12	0.12	0.12	0.12
69	0.12	0.12	0.12	0.12
70	0.12	0.12	0.12	0.12
71	0.12	0.12	0.12	0.12
72	0.12	0.12	0.12	0.12
73	0.12	0.12	0.12	0.12
74	0.12	0.12	0.12	0.12
75	0.12	0.12	0.12	0.12
76	0.12	0.12	0.12	0.12
77	0.12	0.12	0.12	0.12
78	0.12	0.12	0.12	0.12
79	0.12	0.12	0.12	0.12
80	0.12	0.12	0.12	0.12
81	0.12	0.12	0.12	0.12
82	0.12	0.12	0.12	0.12
83	0.12	0.12	0.12	0.12
84	0.12	0.12	0.12	0.12
85	0.12	0.12	0.12	0.12
86	0.12	0.12	0.12	0.12
87	0.12	0.12	0.12	0.12
88	0.12	0.12	0.12	0.12
89	0.12	0.12	0.12	0.12
90	0.12	0.12	0.12	0.12
91	0.12	0.12	0.12	0.12
92	0.12	0.12	0.12	0.12
93	0.12	0.12	0.12	0.12
94	0.12	0.12	0.12	0.12
95	0.12	0.12	0.12	0.12



As shown on the N.M. 1918 map  
to show the